

▶ **CMPIC (Configuration Managed Project Integrated Cabling)** Cloudis cable management software has been in use at major shipbuilders since 1996. The cabling for several major projects has been managed using Cloudis' ICEPIC application. Our recently developed CMPIC (Configuration Managed Project Integrated Cabling) software builds on our experience with shipbuilding customers and now offers a broader range of capabilities from design through to installation planning and the management of the installation process.

In addition to the standard functionality available in CMPIC there are a number of facilities which will be of particular interest to shipbuilders.

**SHIPBUILDING**

▶ **CONFIGURATION MANAGEMENT**

The Configuration Management (CM) functions within CMPIC enable the customer to manage cabling across any number of vessels in a 'class'. The software enables the user to 'apply' any cable or associated data to one or any number of vessels in the class. Using CM, the number of vessels in the class is defined up front and from then on the applicability of all cables and associated data are managed by CMPIC.

Using configuration rules CMPIC of course checks for consistency and logic ensuring that users cannot enter erroneous or inconsistent data.

Items which are configured in CMPIC include cables, nodes, nodal network segments, systems etc.

▶ **BLOCK CONSTRUCTION SUPPORT**

The modular construction of vessels at more than one yard is not uncommon and CMPIC caters for the management of this process.

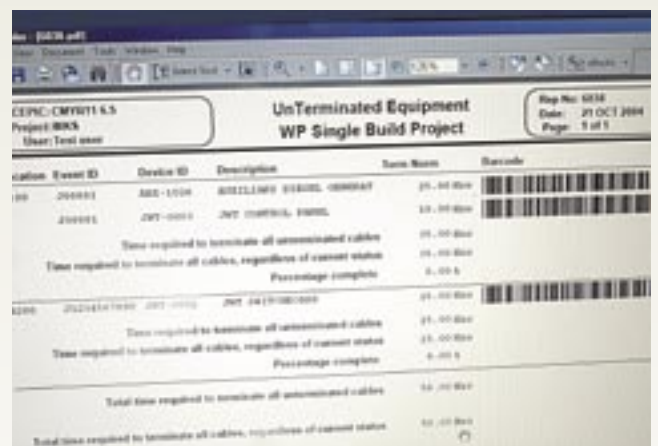
Within CMPIC the vessel can be broken down into 'blocks' representing the method of construction. Cables can be defined as starting and terminating within a block, starting within a block but terminating outside it, starting outside a block but terminating within it or passing through the block.

CMPIC manages the network, routing and installation implications of this type of design and construction.



▶ **CABLE MARKER PRODUCTION**

CMPIC will interface with leading cable marker production systems. You can output data on to cable markers to reduce manual input, speed up the process and avoid potential mistakes.



▶ **INSTALLATION PLANNING**

Within CMPIC the user can create 'Work Packages' with which cables can then be associated for installation. These work packages can be defined in any way but might feasibly be by transit, segregation, block, area, penetration etc. Work packages can also be used to derive metrics which can be used to assist in future planning.



### ▶ SPECIAL PRODUCTION FEATURES

Three features within the production functionality of CMPIC which are of particular interest to shipbuilders are:  
The setting of 'tape marks' on cables to help identify the correct point to which a cable should be pulled. The tape mark can be set from either end of the cable.

The recording of locations of partially pulled cable coils so that they can easily be found for continued installation when required.

Learning from experience which can be carried forward to subsequent vessels in a class. An example of this would be where cable cut lengths are recorded against cables. This data can be used to avoid cable wastage on future vessels in the class.

### ▶ PRODUCTION MULTI SITE SUPPORT

Where cable installation is carried out on more than one site or using subcontractors, CMPIC can be used to co-ordinate the activity on these sites. Access to information within CMPIC, which might be sensitive, can be protected.

### ▶ SEGREGATION MANAGEMENT

Clearly, where space is at a premium and segregation rules are stringent, the management of segregations is paramount. CMPIC can be configured to allow multiple segregations on the same part of the nodal network. Where this is allowed, CMPIC offers segregation spacing to be invoked which is then taken into account in the % fill calculation for the nodal network.

CMPIC can also cater for the use of Mu-Metal to separate segregations and takes account of this in its % fill calculations.

### ▶ APPLICATIONS PROGRAMMING INTERFACE TO CAD

Our API enables CMPIC to work in a generic way with CAD systems, enabling the data required by CMPIC to be extracted from the CAD model and vice-versa. However, we do also offer further development facilities for more sophisticated interfaces between CMPIC and CAD should this be required as part of the design process.

